



# TADANO GR-1000XL 100-TON ROUGH TERRAIN CRANE

TO 154.2'



# SPECS

MAX. LIFTING CAPACITY: 100-TONS

MAX LIFT HEIGHT: 212'

BOOM LENGTH: 39.4' - 154.2'

MAX. WORKING RADIUS: 177'

# OF AXLES: 2

JIB LENGTH: 33.2' OR 58.1'

COUNTERWEIGHT: 22,000 LBS.

DRIVE: 4X4X4

GROSS VEHICLE WEIGHT: 115,610 LBS.

LENGTH: 565.9"

WIDTH: 130.5"

HEIGHT: 149.4"

FEATURES:

HELLO-NET

ASYMMETRICAL OUTRIGGER SET-UP

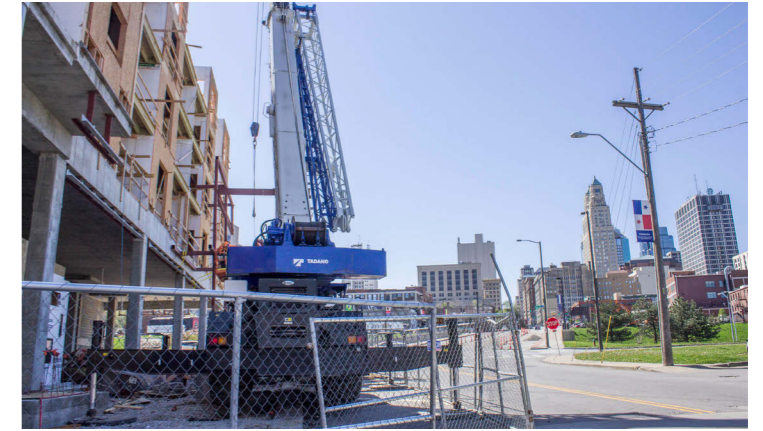
SLOW-STOP

FUEL MONITORING

ECO MODE

SELF-REMOVABLE COUNTERWEIGHT

SEQUENTIAL AND NON-SEQUENTIAL TELESCOPING MODES



888-925-0858

[www.customtruck.com](http://www.customtruck.com)

\*Custom Truck One Source reserves the right to change the specification of any unit at any time without prior notice. This brochure is only a statement of general specifications on the date of this publication.

ASK ABOUT THE CUSTOMIZED AND FLEXIBLE LEASING & FINANCING SOLUTIONS AVAILABLE FROM CUSTOM TRUCK CAPITAL

